

Anchor Point

The Guildford - Floorplan (Type A on Site Plan)

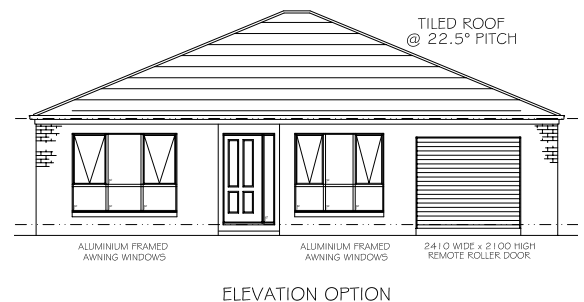
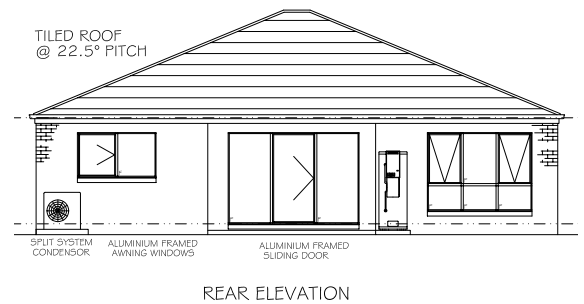
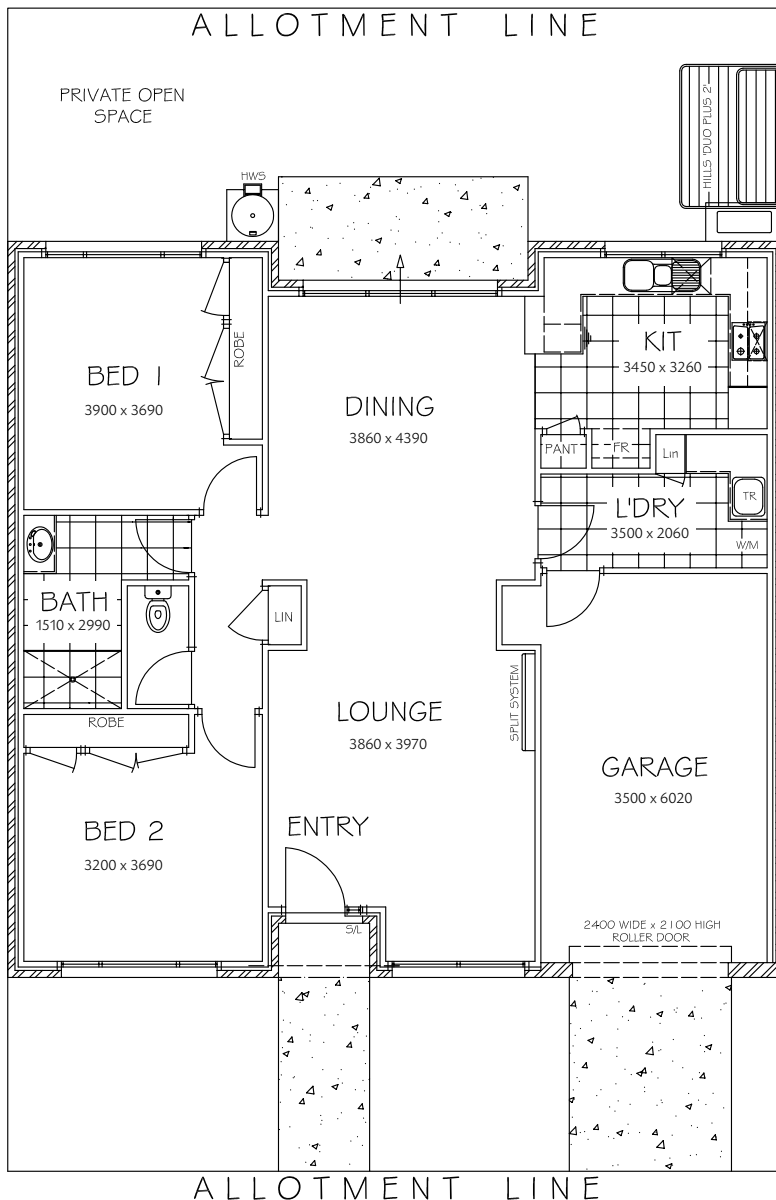
A beautiful two-bedroom home with large living area, and large outdoor patio.

For the discerning buyer who is looking for a simple home to meet their needs. The Guildford offers all you could need for either a single resident or a couple who just need a little extra room for hobbies, storage or overnight visitors.

It comes as standard with a fabulous central bathroom, separate laundry, and sparkling kitchen. The generous light-filled lounge and dining area overlooks both the private courtyard garden at the rear and has a vista to the street as well- keeping you in touch with the world around you.

With a single garage and good storage throughout the Guildford will be a favourite for many at Anchor Point.

The home size (including garage) is 134 m² approximately, and has a rear garden of 48m² approximately.



All floorplans are indicative and subject to change.